

**PROTECTIVE CLOTHING FOR KARTING COMPETITORS HOMOLOGATED ACCORDING TO THE FIA STANDARD 8877-2022**

**TECHNICAL LIST N° 101**

**KARTING OVERALLS**



(For light colored Karting Overalls)

Or

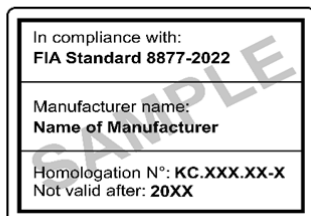


(For dark colored Karting Overalls)

+



**KARTING GLOVES and KARTING SHOES**



+



IF YOU CLICK HERE, YOU CAN DOWNLOAD ALL THE PRESENTATION FORMS

HOMOL. NUMBER	BRAND	MODEL	GRADE OF PROTECTION	START OF HOMOL.	END OF HOMOL. <sup>(1)</sup>	PRODUCT VALID UNTIL <sup>(2)</sup>
KC.001.23-0	ALPINESTARS	KMX-9 V3	1	06.2023	06.2028	2033
KC.002.23-0	ALPINESTARS	KMX-5 V3	1	07.2023	07.2028	2033
KC.003.23-G	ALPINESTARS	TECH-1K V3	N/A	08.2023	08.2028	2033
KC.004.23-G	ALPINESTARS	TECH-1KX V4	N/A	08.2023	08.2028	2033
KC.005.23-0	SPARCO	K46	1	09.2023	09.2028	2033
KC.006.23-Z	ALPINESTARS	TECH-1KX V3	N/A	10.2023	10.2028	2033
KC.007.24-Z	SPARCO	K-PRIME	N/A	01.2024	01.2029	2034
KC.008.24-0	OMP	KS-2X	1	01.2024	01.2029	2034
KC.009.24-0	HRX	FUJI MATT	1	02.2024	02.2029	2034
KC.010.24-0	OMP	KS-X	1	02.2024	02.2029	2034
KC.011.24-Z	OMP	KS-XR	N/A	02.2024	02.2029	2034
KC.012.24-Z	OMP	ARP	N/A	02.2024	02.2029	2034
KC.013.24-0	FREE MINDS	KP24	1	03.2024	03.2029	2034
KC.014.24-0	HRX	FUJI GOLD	1	04.2024	04.2029	2034
KC.015.24-0	HRX	FUJI SHINE	1	04.2024	04.2029	2034
KC.016.24-0	ZULO	DZKS-01	1	06.2024	06.2029	2034
KC.017.24-0	SPARCO	K48	1	06.2024	06.2029	2034

<sup>(1)</sup> The homologation end date represents the final date on which the products may be manufactured

<sup>(2)</sup> The validity of the product must always be that which is indicated on the product homologation label. The dates in this column are the latest possible dates that can be shown on the homologation label

HOMOL. NUMBER	BRAND	MODEL	GRADE OF PROTECTION	START OF HOMOL.	END OF HOMOL. <sup>(1)</sup>	PRODUCT VALID UNTIL <sup>(2)</sup>
KC.018.24-O	SPARCO	K50	1	07.2024	07.2029	2034
KC.019.24-G	OMP	CW0138	N/A	09.2024	09.2029	2034
KC.020.24-G	SPARCO	K-TIDE+	N/A	09.2024	09.2029	2034
KC.021.24-G	SPARCO	K-ARROW+	N/A	09.2024	09.2029	2034
KC.022.24-Z	FREE MINDS	SK24	N/A	10.2024	10.2029	2034
KC.023.24-O	FREE MINDS	K24	1	10.2024	10.2029	2034
KC.024.24-G	OMP	CW0152	N/A	10.2024	10.2029	2034
KC.025.24-G	FREE MINDS	KSLIGHT-24	N/A	10.2024	10.2029	2034
KC.026.24-Z	SPARCO	K-RAPID	N/A	11.2024	11.2029	2034
KC.027.24-O	OMP	CW0131	1	12.2024	12.2029	2034
KC.028.25-O	AL KHAIR INTERNATIONAL	PRIMATE	1	01.2025	02.2030	2035
KC.029.25-O	MARINA	Unik Suit	1	02.2025	02.2030	2035
KC.030.25-G	MARINA	Unik Glove	N/A	03.2025	03.2030	2035
KC.031.25-O	OFFSET	RS-KV	1	03.2025	04.2029	2034
KC.032.25-O	X'ZUIT	IKON 4	1	04.2025	04.2030	2035
KC.033.25-O	CORSA	CKS0124	1	05.2025	05.2030	2035
KC.034.25-O	GALUPPO	ASTRA	1	05.2025	05.2030	2035
KC.035.25-G	ALPINESTARS	TEMPEST v3 WATERPROOF	N/A	07.2025	07.2030	2035
KC.036.25-Z	OMP	CW0160	N/A	09.2025	09.2030	2035
KC.037.25-O	KOBRA	WINNER EVO	GRADE 1	09.2025	09.2030	2035
KC.038.25-Z	SPARCO	K-RAPID WP	N/A	09.2025	09.2030	2035
KC.039.25-Z	ALPINESTARS	SUPERTECH K	N/A	09.2025	09.2030	2035
KC.040.25-G	32Five	PLUS F	N/A	09.2025	09.2030	2035
KC.041.25-G	SPARCO	K-ARROW+ WP	N/A	09.2025	09.2030	2035
KC.042.26-Z	HRX	K-ICON SHOES	1	01.2026	01.2031	2036
KC.043.26-G	OFFSET	CONCEPT	N/A	12.2025	01.2031	2036
KC.044.26-O	MANORACING	MK-Elastic	Grade 1	02.2026	02.2031	2036
KC.045.26-G	SIMPSON	Air Raid	N/A	03.2026	03.2031	2036
KC.046.26-O	DANROW	AEROSUIT V1	Grade 1	04.2026	04.2031	2036

<sup>(1)</sup> The homologation end date represents the final date on which the products may be manufactured

<sup>(2)</sup> The validity of the product must always be that which is indicated on the product homologation label. The dates in this column are the latest possible dates that can be shown on the homologation label

**HOMOLOGATIONS OF PROTECTIVE CLOTHING FOR KARTING COMPETITORS / WARNING**

There are no warnings for this product

<sup>(1)</sup> The homologation end date represents the final date on which the products may be manufactured

<sup>(2)</sup> The validity of the product must always be that which is indicated on the product homologation label. The dates in this column are the latest possible dates that can be shown on the homologation label