

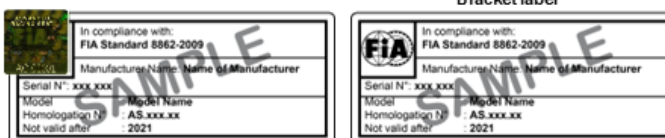
## ADVANCED RACING SEATS HOMOLOGATED ACCORDING TO THE FIA STANDARD 8862-2009

### TECHNICAL LIST N° 40

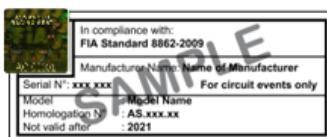
**NOT VALID AFTER  
31.12.2021**



**NEW LABEL IN EFFECT AS  
FROM 01.01.2012**



Label for circuit specific  
seat



#### Important Note:

Use of the homologated brackets subject to the Technical Regulations of the category concerned

The seat (**for circuit events only**) are eligible for use in all the events other than Rally

[IF YOU CLICK HERE, YOU CAN DOWNLOAD REQUIRED DETAILS OF THE ANCHORAGE OF RALLY SEAT BRACKETS](#)

HOMOL. NUMBER	BRAND	MODEL	CIRCUIT SEAT FLOOR BRACKETS	CIRCUIT SEAT BACK BRACKETS	RALLY SEAT BRACKETS	START OF HOMOL.	END OF HOMOL. <sup>(1)</sup>	PRODUCT VALID UNTIL <sup>(2)</sup>
AS.001.09 <sup>(3)</sup>	OMP	HTE-ONE	HC/880	N/A		12.2009	10.2010	2020
AS.002.10	RACETECH	RT4129WTHR	RTB1009M	RTB1006BW		01.2010	01.2027	2037
			9F0.881.570.B LHS 9F0.881.573.B RHS	9F0.881.574.B		06.2018		

<sup>(1)</sup> The homologation end date represents the final date on which the products may be manufactured

<sup>(2)</sup> The validity of the product must always be that which is indicated on the product homologation label. The dates in this column are the latest possible dates that can be shown on the homologation label

<sup>(3)</sup> Please refer to the end of this section

HOMOL. NUMBER	BRAND	MODEL	CIRCUIT SEAT FLOOR BRACKETS	CIRCUIT SEAT BACK BRACKETS	RALLY SEAT BRACKETS	START OF HOMOL.	END OF HOMOL. <sup>(1)</sup>	PRODUCT VALID UNTIL <sup>(2)</sup>
AS.002.10	RACETECH	RT4129WTHR	RTB1009M	47U1-3000-01		05.2018	01.2027	2037
AS.003.10	RACETECH	RT9129WTHR	RTB1009M	RTB1006BW		01.2010	01.2027	2037
AS.004.10	RACETECH	RT4129HRW	RTB1009M	RTB1006B		02.2010	02.2027	2037
			15ARO-173 (LHS) 15ARO-174 (RHS)	47U1-3000-01		05.2018		
AS.005.10	RACETECH	RT9129HRW	RTB1009M	RTB1006B		02.2010	02.2027	2037
			FC1X RTB1129M (LHS) FC1X RTB1129M (RHS)			08.2023		
			WSR-023-K0-113-A WSR-023-K0-114-A			09.2021		
			ZZNA047QP	A1NA303QP		07.2019		
				A1NA219QP		03.2019		
			RTB1009M	47U1-3000-01		05.2018		
			15ARO-173 (LHS) 15ARO-174 (RHS)	15ARO-205		03.2018		
			RTB1009M-LEX	RTB1006B		04.2016		
			LHS-5GT-CO-0069 RHS-5GT-CO-0069	RTB1006B2				
			WSR-020-F6-013-B WSR-020-F6-014-B	RTB1006B		08.2015		
			TDM-LH-002 TDM-RH-002	07ARO-109		03.2013		
LHS-07ARO-113 RHS-07ARO-114								
RTB1009BMW LHS1 RTB1009BMW RHS1	RTBBMWSPC1 RTBBMWRB1							
AS.006.10 <sup>(3)</sup>	SPARCO	PRO-ADV SUPERCARBON & PRO-ADV SUPERCARBON PLUS	00498PROADV	N/A		02.2010	10.2010	2020
AS.007.10	OMP	HTE-ONE E	HC/880	N/A		07.2010	07.2022	2032
					TA22050229B	01.2020		

<sup>(1)</sup> The homologation end date represents the final date on which the products may be manufactured

<sup>(2)</sup> The validity of the product must always be that which is indicated on the product homologation label. The dates in this column are the latest possible dates that can be shown on the homologation label

<sup>(3)</sup> Please refer to the end of this section

HOMOL. NUMBER	BRAND	MODEL	CIRCUIT SEAT FLOOR BRACKETS	CIRCUIT SEAT BACK BRACKETS	RALLY SEAT BRACKETS	START OF HOMOL.	END OF HOMOL. <sup>(1)</sup>	PRODUCT VALID UNTIL <sup>(2)</sup>	
AS.007.10	OMP	HTE-ONE E			TA22060295A	01.2020	07.2022	2032	
					TA22050299A				
					TA22060341A	04.2020			
					T30020075-76A	10.2020			
					HC/940	03.2021			
598802651D 598802652D									
AS.008.10	OMP	HTE-ONE R	HC/880	N/A		07.2010	07.2017	2027	
AS.009.10	CITROËN RACING	M-01	CR 90400678	N/A		07.2010	07.2022	2032	
			Support M01 "Alternative 2"			02.2017			
			Support M01 "Alternative 1"			04.2014			
AS.010.10	SPARCO	ADV-SC	004982ADV	N/A		10.2010	10.2017	2027	
AS.011.10	SPARCO	ADV-SC H	004982ADV	N/A		10.2010	10.2017	2027	
AS.012.10	RACETECH	RT9129THR	RTB1009M	RTB1006B		10.2010	02.2027	2037	
			WSR-023-K0-113-A WSR-023-K0-114-A			09.2021			
			RTB1009M			47U1-3000-01			05.2018
			RTB1009M-LEX			RTB1006B			03.2018
AS.013.10	RACETECH	RT9129HR	RTB1009M	RTB1006B		10.2010	02.2017	2027	
AS.014.10	RECARO	PRO RACER ULTIMA (071.49.000.00)	7307802	N/A		12.2010	12.2017	2027	
AS.015.10 <sup>(3)</sup>	RECARO	PRO RACER ULTIMA 1.0 (071.61.000.00)	7307802	N/A		12.2010	12.2017	2027	
AS.015.10 <sup>(3)</sup>	RECARO	PRO RACER ULTIMA 1.0 (071.61.000.00)	7311176	N/A		03.2017	12.2017	2027	
AS.016.11	SPARCO	ADV-SCX H	004984ADV	N/A		05.2011	05.2027	2037	
					T30020049 T30020050	12.2019			
					6VS 881 035 D (LHS) 6VS 881 035 D (RHS)	04.2022			

<sup>(1)</sup> The homologation end date represents the final date on which the products may be manufactured

<sup>(2)</sup> The validity of the product must always be that which is indicated on the product homologation label. The dates in this column are the latest possible dates that can be shown on the homologation label

<sup>(3)</sup> Please refer to the end of this section

HOMOL. NUMBER	BRAND	MODEL	CIRCUIT SEAT FLOOR BRACKETS	CIRCUIT SEAT BACK BRACKETS	RALLY SEAT BRACKETS	START OF HOMOL.	END OF HOMOL. <sup>(1)</sup>	PRODUCT VALID UNTIL <sup>(2)</sup>
AS.016.11	SPARCO	ADV-SCX H			6VS 881 035 G (LHS) 6VS 881 035 G (RHS)	04.2022	05.2027	2037
AS.017.11	FIBREWORKS GMBH	AUDI PS 1 M	Ne pas utiliser de supports / No need brackets (foot spacer n° 42A.881.291.A)	N/A		05.2011	05.2017	2027
AS.018.11	FIBREWORKS GMBH	AUDI PS 1 L	Ne pas utiliser de supports / No need brackets (foot spacer n° 42A.881.291.A)	N/A		06.2011	06.2017	2027
AS.019.11	DOME	DH11	81030-F11G-0000 (right) 81031-F11G-0000 (left)	N/A		09.2011	09.2017	2027
AS.020.11	RECARO	PRO RACER ULTIMA XL (071.62.000.00)	7307802	N/A		11.2011	11.2017	2027
			7311176			03.2017		
AS.021.12	SABELT	GT-620	Z200010	N/A		01.2012	01.2017	2027
AS.022.12	SPARCO	ADV-SCX	004985ADV	N/A		02.2012	02.2027	2037
					P30020022 (RHS) P30020021 (LHS)	05.2023		
					T30020063 T30020064	03.2020		
					T30020059 T30020060	01.2020		
					T30020049 T30020050	12.2019		
					004992ADV	N/A		
		004987ADV	N/A		03.2014			
AS.023.12	CITROËN RACING	CITROEN RACING CR2	CORNIERES CR2	N/A		03.2012	03.2022	2032
			Support CR2 "Alternative 4"			02.2017		
			Support CR2 "Alternative 3"			04.2015		
			Support CR2 "Alternative 2"			06.2014		
			Support CR2 "Alternative 1"			04.2014		

<sup>(1)</sup> The homologation end date represents the final date on which the products may be manufactured

<sup>(2)</sup> The validity of the product must always be that which is indicated on the product homologation label. The dates in this column are the latest possible dates that can be shown on the homologation label

<sup>(3)</sup> Please refer to the end of this section

HOMOL. NUMBER	BRAND	MODEL	CIRCUIT SEAT FLOOR BRACKETS	CIRCUIT SEAT BACK BRACKETS	RALLY SEAT BRACKETS	START OF HOMOL.	END OF HOMOL. <sup>(1)</sup>	PRODUCT VALID UNTIL <sup>(2)</sup>
AS.024.12	DOMÉ	DH11W	81030-F11G-0000 (right) 81031-F11G-0000 (left)	N/A		04.2012	04.2017	2027
AS.025.12	OMP	HTE X ONE	HC/900	N/A		07.2012	07.2017	2027
AS.026.12	FW TECHNOLOGY	BRAZILIAN STOCK CAR SEAT (Ener-Core EC50 "orange" foam thickness from 20 to 100 mm)	Ne pas utiliser de supports (Fixation directe au plancher) / No need brackets (Floor direct fixation)	N/A		10.2012	10.2017	2027
AS.027.12	RECARO	P 1300 GT (for circuit events only)	7308864 (sliding brackets)	N/A		12.2012	12.2022	2032
			7309312 (fixed brackets)			06.2013		
AS.028.13	HWA AG	EREBUS MOTORSPORT - E CELL	Ne pas utiliser de supports (Fixation directe au plancher) / No need brackets (Floor direct fixation)	Clamp 612228022/020 Lid Clamp 612228024		02.2013	02.2018	2028
AS.029.13	SPARCO	ADV-SV	004982ADV	N/A		04.2013	04.2018	2028
AS.030.13	SPARCO	EVR-SV	004982ADV	N/A		04.2013	04.2018	2028
AS.031.13	RALF BRAND	AUDI PS 1 M	Ne pas utiliser de supports / No need brackets (foot spacer n° 42A.881.291.A)	N/A		10.2013	10.2018	2028
AS.032.13	RALF BRAND	AUDI PS 1 L	Ne pas utiliser de supports / No need brackets (foot spacer n° 42A.881.291.A)	N/A		10.2013	10.2018	2028
AS.033.14	OMP	HRC ONE	HC/907	N/A		03.2014	03.2024	2034
			FE-1006429M/S			01.2016		
			HC/907-1			05.2015		
AS.034.14	ATECH	CARBON RS	BRK C-RS	N/A		04.2014	04.2019	2029
AS.035.14	ATECH	CARBON RS8	BRK C-RS	N/A		04.2014	04.2019	2029
AS.036.14	FW TECHNOLOGY	FIBREWORKS RS-01	FW 14-H000005 LH FW 14-000006 RH	N/A		04.2014	04.2019	2029
			RML 30-Q1005 RML 30-Q1006					
AS.037.14	SPARCO	ADV ELITE	004988ADV	N/A		10.2014	10.2029	2039

<sup>(1)</sup> The homologation end date represents the final date on which the products may be manufactured

<sup>(2)</sup> The validity of the product must always be that which is indicated on the product homologation label. The dates in this column are the latest possible dates that can be shown on the homologation label

<sup>(3)</sup> Please refer to the end of this section

HOMOL. NUMBER	BRAND	MODEL	CIRCUIT SEAT FLOOR BRACKETS	CIRCUIT SEAT BACK BRACKETS	RALLY SEAT BRACKETS	START OF HOMOL.	END OF HOMOL. <sup>(1)</sup>	PRODUCT VALID UNTIL <sup>(2)</sup>
AS.037.14	SPARCO	ADV ELITE			905036838A - 905036848A	12.2025	10.2029	2039
					905036518A - 905036528A			
			81102-F28S-R100 81112-F28S-R100	N/A		04.2022		
					T30020069 T30020070	12.2019		
T30020043 T30020044								
T30020047 T30020048 T30020053 T30020054								
AS.038.15	VOLKSWAGEN	VWMS RACING SEAT	WSK_015_823_E/01	N/A		04.2015	04.2020	2030
AS.039.15	SABELT	GT-625L (for circuit events only)	RA8862019	N/A		04.2015	04.2020	2030
AS.040.15	ATECH	SCG003c	SCG003C 08134&08135	SCG003C 08136		05.2015	05.2020	2030
AS.041.15	RACETECH	RT9129WHR	RTB1009M	RTB1006BW		07.2015	01.2027	2037
			71U1-3201L-01 (LHS) 71U1-3201R-01 (RHS)	71U1-3202-02		03.2022		
			9F0.881.570.D (LHS) RTB1129M (RHS)	9F0.881.574.D		05.2021		
			48U1-3201L-REV002 (LHS) 48U1-3201R-REV002 (RHS)	48U1-3200-03-REV009		10.2019		
			A1NA261QP A1NA263QP	A1NA265QP		07.2019		
			RTB1009M	47U1-3000-01		05.2018		
			15ARO-177 (LHS) 15ARO-178 (RHS)	15ARO-205		08.2015		
			LHS-07ARO-113 RHS-07ARO-116	07ARO-115				
AS.042.15	FIBREWORKS USA	842029801A	842029901A 842030001A	N/A		09.2015	09.2020	2030

<sup>(1)</sup> The homologation end date represents the final date on which the products may be manufactured

<sup>(2)</sup> The validity of the product must always be that which is indicated on the product homologation label. The dates in this column are the latest possible dates that can be shown on the homologation label

<sup>(3)</sup> Please refer to the end of this section

HOMOL. NUMBER	BRAND	MODEL	CIRCUIT SEAT FLOOR BRACKETS	CIRCUIT SEAT BACK BRACKETS	RALLY SEAT BRACKETS	START OF HOMOL.	END OF HOMOL. <sup>(1)</sup>	PRODUCT VALID UNTIL <sup>(2)</sup>
AS.043.15	FIBREWORKS USA	842029701A	842029901A 842030001A	N/A		09.2015	09.2020	2030
			8439429 8439430			03.2018		
AS.044.15	RACETECH	RT4129WHR	RTB1009M	RTB1006BW		11.2015	01.2027	2037
			71U1-3201L-01 (LHS) 71U1-3201R-01 (RHS)	71U1-3202-02		03.2022		
			RTB1009M	47U1-3000-01		05.2018		
			15ARO-177 (LHS) 15ARO-178 (RHS)	15ARO-205				
AS.045.15	HWA AG	DSC15-GT3	Ne pas utiliser de supports (Fixation directe au plancher) / No need brackets (Floor direct fixation)	Left Spacer 514222012.000.02 Right Spacer 514222013.000.02		12.2015	12.2030	2040
AS.046.16	SPARCO	ADV GT (for circuit events only)	Ne pas utiliser de supports excepté supports avant droit /No need brackets except right front bracket: 004989ADV	N/A		01.2016	01.2021	2031
AS.047.16	SABELT	GT-630H	XRFST0005	N/A		01.2016	01.2021	2031
				67143-W731A 67211-W701A		12.2019		
AS.048.16	DOME	DOME RS16 (for circuit events only)	85000-2B55-0000 (right) 85001-2B55-0000 (left)	N/A		02.2016	02.2021	2031
AS.049.16	SPARCO	ADV NSX GT3 (for circuit events only)	Ne pas utiliser de supports (Fixation directe au plancher) / No need brackets (Floor direct fixation)	N/A		03.2016	03.2021	2031
			81102-F28S-R010			02.2020		
AS.050.16	CORBEAU	PREDATOR (for circuit events only)	Predator mounting feet DG-96-A	N/A		03.2016	03.2021	2031
AS.051.16	OMP	HTE ONE J	HC/928	N/A		03.2016	03.2021	2031
AS.052.16	PRATT & MILLER	PM-0406	PM-0408	PM-0407		04.2016	04.2021	2031

<sup>(1)</sup> The homologation end date represents the final date on which the products may be manufactured

<sup>(2)</sup> The validity of the product must always be that which is indicated on the product homologation label. The dates in this column are the latest possible dates that can be shown on the homologation label

<sup>(3)</sup> Please refer to the end of this section

HOMOL. NUMBER	BRAND	MODEL	CIRCUIT SEAT FLOOR BRACKETS	CIRCUIT SEAT BACK BRACKETS	RALLY SEAT BRACKETS	START OF HOMOL.	END OF HOMOL. <sup>(1)</sup>	PRODUCT VALID UNTIL <sup>(2)</sup>
AS.053.16	DOME	DOME RS16R	85000-2B55-0000 (right) 85001-2B55-0000 (left)	N/A		05.2016	05.2026	2036
			85000-2B55-L010 (right) / 85001-2B55-L010(left)			04.2017		
			83000-2B55-0000 (sliding brackets)			06.2016		
AS.054.16	RACETECH	RT9129WTHRL	RTB1009M	RTB1006BW		09.2016	09.2026	2036
				47U1-3000-01		05.2018		
AS.055.16	RACETECH	RT9129HRWP	RTB1129M	9F0.881.574.A		09.2016	09.2021	2031
AS.056.16	SABELT	GT-621	XRFST0007	N/A		10.2016	10.2021	2031
					RFST0054	09.2021		
					67211-W711A			
					67143-W771A			
						12.2019		
AS.057.16	SABELT	GT-635 M (for circuit events only)	RFST635M (Sliding brackets)	N/A		10.2016	10.2026	2036
			RFST635CH1M (Sliding brackets)			02.2017		
AS.058.16	SABELT	GT-635 XL (for circuit events only)	RFST635XL (Sliding brackets)	N/A		10.2016	10.2026	2036
			RFST635CH1XL (Sliding brackets)			02.2017		
AS.059.16	AUDI	PS03 (This seat is authorized for 4-points and for 6-points installation)	Optional floor spacers n° 4SA 881 494 X (X variable or no digit) (Thickness between 80mm and 0mm acceptable)	N/A		11.2016	11.2026	2036
				8YA 881 959		07.2021		
			9F0.881.573.C 9F0.881.574.C	9F0.881.570.C		03.2019		

<sup>(1)</sup> The homologation end date represents the final date on which the products may be manufactured

<sup>(2)</sup> The validity of the product must always be that which is indicated on the product homologation label. The dates in this column are the latest possible dates that can be shown on the homologation label

<sup>(3)</sup> Please refer to the end of this section

HOMOL. NUMBER	BRAND	MODEL	CIRCUIT SEAT FLOOR BRACKETS	CIRCUIT SEAT BACK BRACKETS	RALLY SEAT BRACKETS	START OF HOMOL.	END OF HOMOL. <sup>(1)</sup>	PRODUCT VALID UNTIL <sup>(2)</sup>
AS.059.16	AUDI	PS03 (This seat is authorized for 4-points and for 6-points installation)	Optional floor spacers n° 4SA 881 494 X (X variable or no digit) (Thickness between 80mm and 0mm acceptable)	4S9 881 959 A spacers 4S9 881 492 and shims		04.2017	11.2026	2036
				4S9 881 959 spacers 4S9 881 492 and shims				
				4SA 881 959 B				
				4SA 881 959 A				
AS.060.16	SABELT	GT-635-F M	RFST0011	N/A		11.2016	11.2026	2036
AS.061.16	SABELT	GT-635-F XL	RFST0011	N/A		11.2016	11.2026	2036
			RCST124AB202 RCST124AB002			03.2019		
AS.062.16	ATECH	CARBON RS7	BRK C-RS	N/A		11.2016	11.2021	2031
AS.063.17	VOLKSWAGEN	VWMS RACING SEAT V2	WSK_016_574_C	N/A		03.2017	03.2022	2032
AS.064.17	SPARCO	ADV XT	49605	N/A		06.2017	06.2027	2037
					T30020067 T30020068	01.2020		
AS.065.17	CORBEAU	PREDATOR SV (for circuit events only)	Predator mounting feet DG-96-A	N/A		07.2017	07.2027	2037
AS.066.17	MOTORDRIVE	MD10	MD10-SF-05	N/A		08.2017	08.2027	2037
AS.067.17	OMP	HTE ONE XL	HC/928	N/A		08.2017	08.2027	2037
			601802663-00 601802664-00			09.2023		
			601802661-01 601802662-01					

<sup>(1)</sup> The homologation end date represents the final date on which the products may be manufactured

<sup>(2)</sup> The validity of the product must always be that which is indicated on the product homologation label. The dates in this column are the latest possible dates that can be shown on the homologation label

<sup>(3)</sup> Please refer to the end of this section

HOMOL. NUMBER	BRAND	MODEL	CIRCUIT SEAT FLOOR BRACKETS	CIRCUIT SEAT BACK BRACKETS	RALLY SEAT BRACKETS	START OF HOMOL.	END OF HOMOL. <sup>(1)</sup>	PRODUCT VALID UNTIL <sup>(2)</sup>
AS.067.17	OMP	HTE ONE XL	HCO-0952 (LHS) HCO-0952 (RHS)	N/A		04.2023	08.2027	2037
			HC/949 (LHS) HC/949 (RHS)			06.2022		
			600802661A/01 600802662A/01			05.2022		
						T30020055-56 01.2020		
AS.068.18	OMP	HTE ONE S	HC/880	N/A		02.2018	02.2023	2033
					598802651F 598802652F 03.2018			
AS.069.18	RECARO	RACE 1400 R	730 780 2	N/A		03.2018	03.2023	2033
			7311176			04.2018		
			418 945 8					
AS.070.18	SPARCO	ADV-SC 19	004982ADV	N/A		07.2018	07.2028	2038
AS.071.18	SABELT	GT-E (for circuit events only)	RCST0003 RCST0004	N/A		07.2018	07.2023	2033
AS.072.18	RACETECH	RT-BABT62-A1 (for circuit events only)	Ne pas utiliser de supports (Fixation directe au plancher) / No need brackets (Floor direct fixation)	JOS-001-A13-095		08.2018	08.2023	2033
AS.073.18	CORBEAU	PREDATOR GT (for circuit events only)	Predator mounting feet 1137B / 1138B 1140B / 1141B	Predator GT Shoulder Mount 1304D		11.2018	11.2023	2033
AS.074.18	MOTORDRIVE	MD20	MD20-1-M01	MD20-1-M02		11.2018	11.2028	2038
AS.075.19	OMP	HRC ONE LITE	HC/929	N/A		01.2019	01.2029	2039
					DYXTR131383 DYXTR131384 02.2022			
					DYXTR131405 DYXTR131406 01.2022			
					DYXTR131439 DYXTR131440 08.2021			

<sup>(1)</sup> The homologation end date represents the final date on which the products may be manufactured

<sup>(2)</sup> The validity of the product must always be that which is indicated on the product homologation label. The dates in this column are the latest possible dates that can be shown on the homologation label

<sup>(3)</sup> Please refer to the end of this section

HOMOL. NUMBER	BRAND	MODEL	CIRCUIT SEAT FLOOR BRACKETS	CIRCUIT SEAT BACK BRACKETS	RALLY SEAT BRACKETS	START OF HOMOL.	END OF HOMOL. <sup>(1)</sup>	PRODUCT VALID UNTIL <sup>(2)</sup>
AS.075.19	OMP	HRC ONE LITE			TA22050457A TA22050458A	04.2021	01.2029	2039
					T22050365 T22050366A	10.2020		
AS.076.19	MOTORDRIVE	MD20/15	MD20-1-M01	MD20-1-M02		03.2019	11.2028	2038
AS.077.19	MOTORDRIVE	MD20/30	MD20-1-M01	MD20-1-M02		03.2019	11.2028	2038
AS.078.19	ATECH	CARBON RS - LHT	ATBRK-18 UL	N/A		04.2019	04.2029	2039
					DYXRQ131103-00-A01 DYXRQ131104-00-A01	07.2024		
					DYXRQ131328 / DYXRQ131329	04.2024		
					6VS_881_035_M (LHS) 6VS_881_035_M (RHS)	09.2022		
					6VS 881 035 J (LHS) 6VS 881 035 J (RHS)	04.2022		
AS.079.19	ATECH	CARBON RS8-LHT	ATBRK-18 UL	N/A		05.2019	04.2029	2039
AS.080.19	SPARCO	ADV XT GF	0049605	N/A		06.2019	06.2024	2034
AS.081.19	SABELT	GT-PRO M	RFST0025	N/A		07.2019	07.2029	2039
			67107-EJ7 67108-EJ7			05.2022		
			RFST0028			12.2019		
AS.082.19	RECARO	P1300 GT LW (for circuit events only)	7308864 (Sliding brackets)	N/A		08.2019	08.2029	2039
AS.083.19	OMP	HRC ONE LITE RC	HC/929	HA/805/SP		08.2019	08.2024	2034
AS.084.19	OMP	HTE ONE LITE	HC/934	N/A		09.2019	09.2029	2039
					66VS 881 035 R	08.2024		
					6VS 881 035 Q			
					67110-WBB	06.2024		
					DYXRQ131287 DYXRQ131288	01.2024		
					DYXRQ131257 DYXRQ131233			

<sup>(1)</sup> The homologation end date represents the final date on which the products may be manufactured

<sup>(2)</sup> The validity of the product must always be that which is indicated on the product homologation label. The dates in this column are the latest possible dates that can be shown on the homologation label

<sup>(3)</sup> Please refer to the end of this section

HOMOL. NUMBER	BRAND	MODEL	CIRCUIT SEAT FLOOR BRACKETS	CIRCUIT SEAT BACK BRACKETS	RALLY SEAT BRACKETS	START OF HOMOL.	END OF HOMOL. <sup>(1)</sup>	PRODUCT VALID UNTIL <sup>(2)</sup>		
AS.084.19	OMP	HTE ONE LITE			DYXTR131861 DYXTR131862	02.2023	09.2029	2039		
					P30020019 P30020020	07.2022				
					DYXTR131645 DYXTR131646	04.2022				
					DYXTR131675 DYXTR131676					
					DYXTR131561 DYXTR131562	02.2022				
					DYXTR131559 DYXTR131560	02.2022				
					DYXTR131543 DYXTR131544	02.2022				
					DYXTR131405 DYXTR131406	01.2022				
					67110-WB71A					
					67110-WB62A					
					67204-WB42A					
					DYXTR131169 DYXTR131170					
					DYXTR131287 DYXTR131288					
					DYXTR131305 DYXTR131306					
					RF04P0690014 RF04P0690015	N/A			06.2021	
									67143-W76	10.2020
									TA22050339A	04.2020
		TA22060291A	01.2020							
		TA22060293A								
		TA22060277A								
		TA22060275A								
		TA22060259A								

<sup>(1)</sup> The homologation end date represents the final date on which the products may be manufactured

<sup>(2)</sup> The validity of the product must always be that which is indicated on the product homologation label. The dates in this column are the latest possible dates that can be shown on the homologation label

<sup>(3)</sup> Please refer to the end of this section

HOMOL. NUMBER	BRAND	MODEL	CIRCUIT SEAT FLOOR BRACKETS	CIRCUIT SEAT BACK BRACKETS	RALLY SEAT BRACKETS	START OF HOMOL.	END OF HOMOL. <sup>(1)</sup>	PRODUCT VALID UNTIL <sup>(2)</sup>
AS.084.19	OMP	HTE ONE LITE			TA22050251A	01.2020	09.2029	2039
					TA22050245A			
					TA22050273A			
					TA22050247A			
					TA22050243A			
					TA22050233B			
AS.085.19	OMP	HTC ONE	HC/935/FR HC/935/FL HC/935/RR HC/935/RL	N/A		11.2019	11.2029	2039
AS.086.20	SABELT	GT-PRO XL	RFST0033	N/A		03.2020	03.2030	2040
			RFST0102			05.2025		
			RFST0086			03.2023		
			RFST0062 (RHS) RFST0062 (LHS)			09.2022		
			RFST0047			06.2021		
			RFST0038			04.2021		
			RFST0032			08.2020		
			RFST0036			03.2020		
AS.087.20	SABELT	GT-PRO XL 6 POINT	RFST0034	RFST0035		03.2020	03.2025	2035
AS.088.20	SABELT	GT-PRO CUP	RFST0037 (sliding brackets)	N/A		08.2020	09.2030	2040
AS.089.21	RECARO	x2879X12001 (for circuit events only)	Ne pas utiliser de supports (Fixation directe au plancher) / No need brackets (Floor direct fixation)	X2679025001		04.2021	04.2026	2036
AS.090.21	CORBEAU	CORBEAU ARS-6	1965-A 1966-A 1967-A	1977-A		04.2021	04.2026	2036
AS.091.21	FIBREWORKS USA	8446039-1 (for circuit events only)	8443691 8443690	8443687		06.2021	06.2026	2036
AS.092.21	RACETECH	RT8129HRP	9RB.881.570 (LH) 9RB.881.573 (RH)	9F0.881.574.B		06.2021	06.2031	2041
AS.093.21	OMP	HTE ONE E2	HC/935/FR HC/935/FL HC/935/RR HC/935/RL	N/A		06.2021	06.2026	2036

<sup>(1)</sup> The homologation end date represents the final date on which the products may be manufactured

<sup>(2)</sup> The validity of the product must always be that which is indicated on the product homologation label. The dates in this column are the latest possible dates that can be shown on the homologation label

<sup>(3)</sup> Please refer to the end of this section

HOMOL. NUMBER	BRAND	MODEL	CIRCUIT SEAT FLOOR BRACKETS	CIRCUIT SEAT BACK BRACKETS	RALLY SEAT BRACKETS	START OF HOMOL.	END OF HOMOL. <sup>(1)</sup>	PRODUCT VALID UNTIL <sup>(2)</sup>
AS.093.21	OMP	HTE ONE E2			DYXRQ131287 DYXRQ131288	01.2024	06.2026	2036
					DYXRQ131257			
					DYXRQ131233			
			HC/950 (RHS) HC/950 (LHS)	N/A		06.2022		
					6VS 881 035 H (LHS) 6VS 881 035 H (RHS)	04.2022		
		6VS 881 035 E (LHS) 6VS 881 035 E (RHS)						
				67207-5B2 67208-5B2	08.2021			
				67109-5B6 67110-5B6	08.2021			
AS.094.21	FIBREWORKS USA	8431266	842029901A 842030001A	N/A		06.2021	06.2026	2036
AS.095.21	SPARCO	ADV PRIME	004990ADV	N/A		08.2021	08.2026	2036
			004923 (RHS) 004923 (RHS)			06.2022		
					P30020009 BRKA (LH) P30020010A BRK (RH)	01.2022		
					P30020007 BRKA (LH) P30020008A BRK (RH)			
		P30020005 BRKA (LH) P30020006A BRK (RH)						
				P30020003 BRKA (LH) P30020004A BRK (RH)				
AS.096.21	OMP	HTE ONE LITE W	HC/946	N/A		11.2021	11.2026	2036
			HCO-0956			01.2026		
					67110-WBC1	02.2025		
					67110-WB9	02.2023		
		67204-WB6						

<sup>(1)</sup> The homologation end date represents the final date on which the products may be manufactured

<sup>(2)</sup> The validity of the product must always be that which is indicated on the product homologation label. The dates in this column are the latest possible dates that can be shown on the homologation label

<sup>(3)</sup> Please refer to the end of this section

HOMOL. NUMBER	BRAND	MODEL	CIRCUIT SEAT FLOOR BRACKETS	CIRCUIT SEAT BACK BRACKETS	RALLY SEAT BRACKETS	START OF HOMOL.	END OF HOMOL. <sup>(1)</sup>	PRODUCT VALID UNTIL <sup>(2)</sup>
AS.096.21	OMP	HTE ONE LITE W			67110-WB81A	01.2022	11.2026	2036
					67204-WB51A			
AS.097.22	AUDI	PS04 (for circuit events only)	Optional floor spacers n° 4SA 881 494 X (X variable or no digit) (Thickness between 80mm and 0mm acceptable)	4SA 881 959 B		03.2022	03.2027	2037
				4S9 881 959 Mounting spacers 4S9 881 492 X (X variable or no digit) (Thickness between 55 mm and 0mm acceptable)				
				4S9 881 959 A Mounting spacers 4S9 881 492 X (X variable or no digit) (Thickness between 55 mm and 0mm acceptable)				
				8YA 881 959 A Mounting spacers 8YA 880 183 X (X variable or no digit) (Thickness between 12 mm and 0mm acceptable) Seat spacers 8YA 880 185 (Thickness between 10 mm and 0mm acceptable)				
AS.098.22	RACETECH	RT4129THR	RTB1009M (LHS) RTB1009M (RHS)	RTB1006B		06.2022	02.2027	2037
AS.099.22	SPARCO	ADV COMPETITION	004924 (RHS) 004924 (LHS)	N/A		06.2022	06.2027	2037
AS.100.22	RECARO	PRO SUPREME GT CR (for circuit events only)	20047459 20047461 RFST0049	20047279		06.2022	06.2027	2037
AS.101.22	SABELT	GT-X XL (for circuit events only)	RFST0049	RFST0074		10.2022	10.2027	2037
			RFST0100	RFST0101		11.2024		
			RFST0049	RFST0075		10.2022		
				RFST0076				
				RFST0073				

<sup>(1)</sup> The homologation end date represents the final date on which the products may be manufactured

<sup>(2)</sup> The validity of the product must always be that which is indicated on the product homologation label. The dates in this column are the latest possible dates that can be shown on the homologation label

<sup>(3)</sup> Please refer to the end of this section



HOMOL. NUMBER	BRAND	MODEL	CIRCUIT SEAT FLOOR BRACKETS	CIRCUIT SEAT BACK BRACKETS	RALLY SEAT BRACKETS	START OF HOMOL.	END OF HOMOL. <sup>(1)</sup>	PRODUCT VALID UNTIL <sup>(2)</sup>
AS.108.24	OMP	HTE ONE ULTRA LITE 7			DYETR131209 - DYETR131210	10.2025	07.2029	2039
					DYETR131131 DYETR131132	02.2025		
					DYETR131135 DYETR131136			
AS.109.24	OMP	HTE ONE ULTRA LITE	HCO-0953			07.2024	07.2029	2039
AS.110.24	RACETECH	RT8139WHR	RTB1009-TCDLH, RTB1009-TCDRH	RTB1006-TCDBK		12.2024	12.2029	2039
AS.111.26	SPARCO	4LM881027		4LM881033 LONG BRKT		02.2026	02.2031	2041
			No need brackets	4LM881033 SHORT BRKT				
AS.112.26	OMP	HTE ONE ULTRA LITE H	HCO-0953			03.2026	03.2031	2041
AS.113.26	HRX	FIGHTER	HRX - FIGHTER 8862-2009 BRACKETS			05.2026	05.2031	2041

<sup>(1)</sup> The homologation end date represents the final date on which the products may be manufactured

<sup>(2)</sup> The validity of the product must always be that which is indicated on the product homologation label. The dates in this column are the latest possible dates that can be shown on the homologation label

<sup>(3)</sup> Please refer to the end of this section

**HOMOLOGATION OF ADVANCED RACING SEATS / WARNING****IMPORTANT**

For safety reasons, please note that the homologation of the following competition seat, whatever the validity deadline, is withdrawn **with immediate effect**.

Manufacturer: **RECARO AUTOMOTIVE GMBH & CO. KG**

Model: **PRO RACER ULTIMA 1.0 (071.61.000.00)**

Homologation n° : **AS.015.10**

As this seat **can no longer be considered as complying with the standard FIA 8862-2009 Advanced Racing Seats**, its use is prohibited in all cases in which compliance with the above-mentioned standards is mandatory.

<sup>(1)</sup> The homologation end date represents the final date on which the products may be manufactured

<sup>(2)</sup> The validity of the product must always be that which is indicated on the product homologation label. The dates in this column are the latest possible dates that can be shown on the homologation label

<sup>(3)</sup> Please refer to the end of this section

**IMPORTANT**

For safety reasons, please note that the homologation of the following competition seat, whatever the validity deadline, is withdrawn **with immediate effect**.

Manufacturer: **Racing Force S.p.A (OMP)**

Model: **HTE-ONE**

Homologation n° : **AS.001.09**

As this seat **can no longer be considered as complying with the standard FIA 8862-2009 Advanced Racing Seats**, its use is prohibited in all cases in which compliance with the above-mentioned standards is mandatory.

**IMPORTANT**

For safety reasons, please note that the homologation of the following competition seat, whatever the validity deadline, is withdrawn **with immediate effect**.

Manufacturer: **SPARCO S.P.A.**

Model: **PRO ADV SUPERCARBON & PRO ADV SUPERCARBON PLUS**

Homologation n° : **AS.006.10**

As this seat **can no longer be considered as complying with the standard FIA 8862-2009 Advanced Racing Seats**, its use is prohibited in all cases in which compliance with the above-mentioned standards is mandatory.

<sup>(1)</sup> The homologation end date represents the final date on which the products may be manufactured

<sup>(2)</sup> The validity of the product must always be that which is indicated on the product homologation label. The dates in this column are the latest possible dates that can be shown on the homologation label

<sup>(3)</sup> Please refer to the end of this section