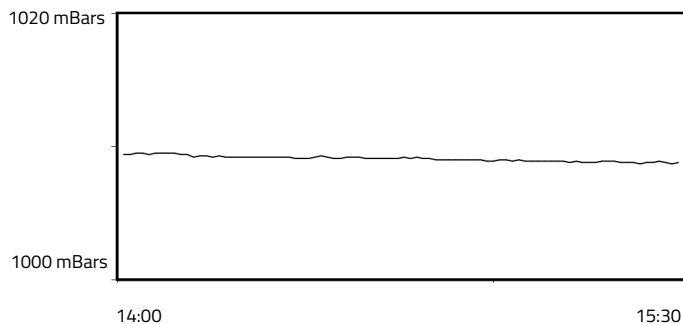


FORMULA 1 LENOVO JAPANESE GRAND PRIX 2025 - Suzuka

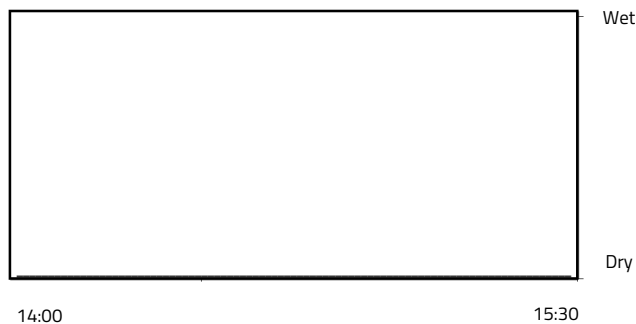
Weather Report - Sunday 6 April 2025

AIR PRESSURE

Maximum: 1009.5 mBars Minimum: 1008.7 mBars

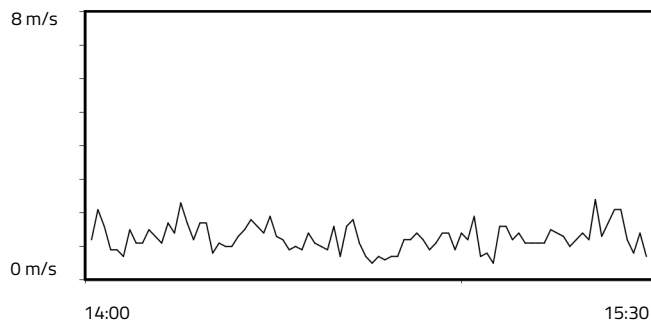


RAINFALL

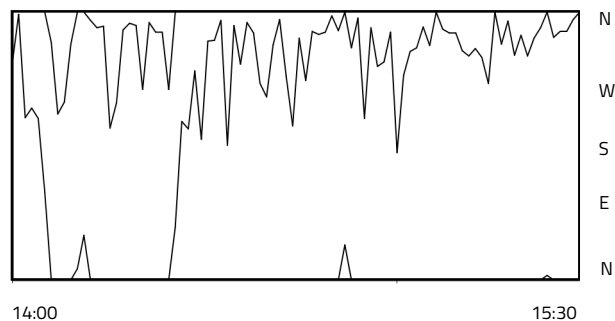


WIND SPEED

Maximum: 2.4 m/s Minimum: 0.5 m/s

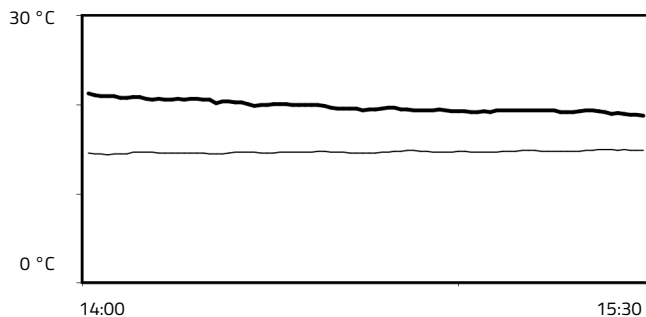


WIND DIRECTION



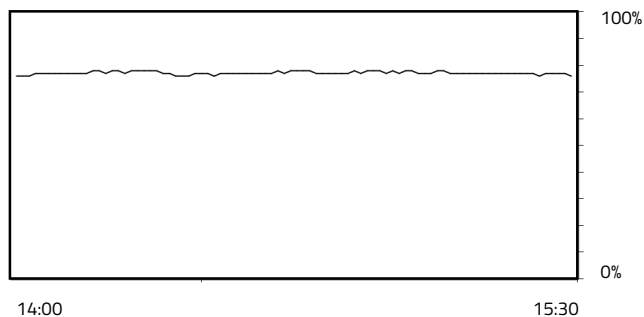
TEMPERATURE

Air Maximum: 15°C Air Minimum: 14.4°C
Track Maximum: 21.3°C Track Minimum: 18.8°C



RELATIVE HUMIDITY

Maximum: 78.0% Minimum: 76.0%



— TRACK TEMPERATURE
— AIR TEMPERATURE

Weather Data Supplied by FIA