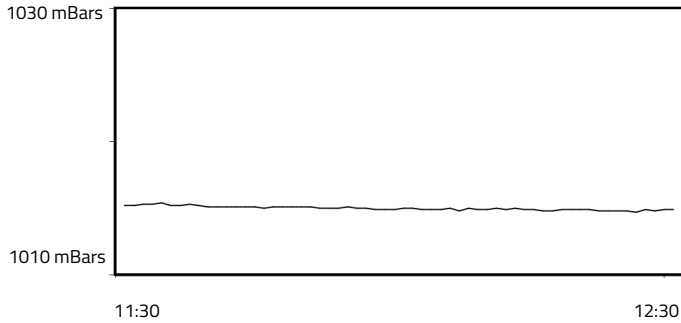


## FORMULA 1 LENOVO JAPANESE GRAND PRIX 2025 - Suzuka

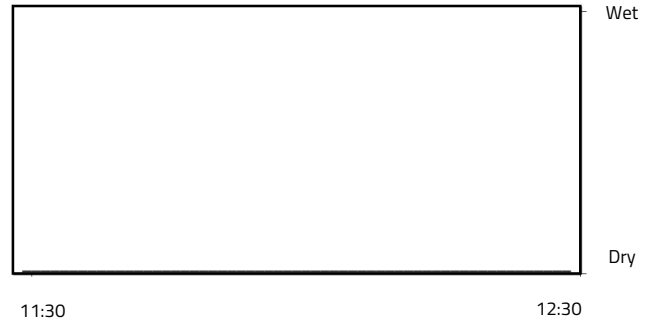
### Weather Report - Saturday 5 April 2025

#### AIR PRESSURE

Maximum: 1015.4 mBars Minimum: 1014.7 mBars

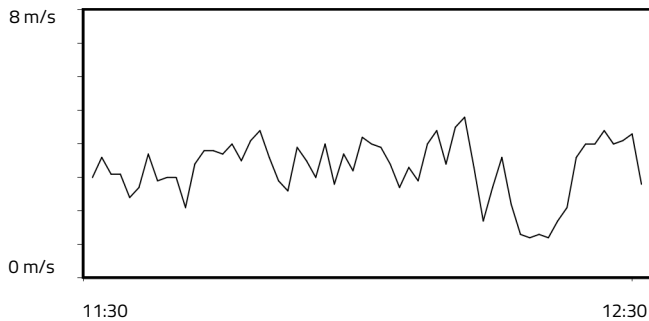


#### RAINFALL

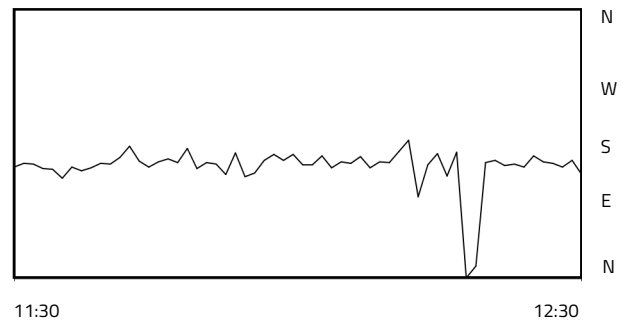


#### WIND SPEED

Maximum: 4.8 m/s Minimum: 1.2 m/s

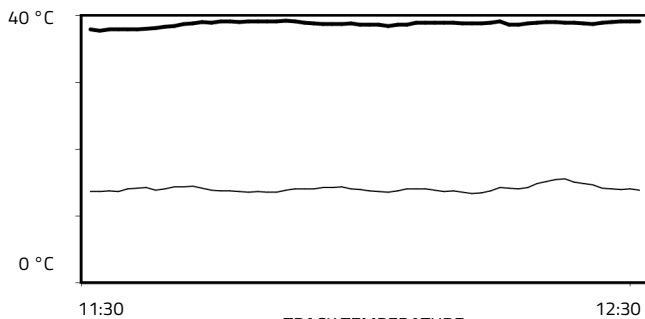


#### WIND DIRECTION



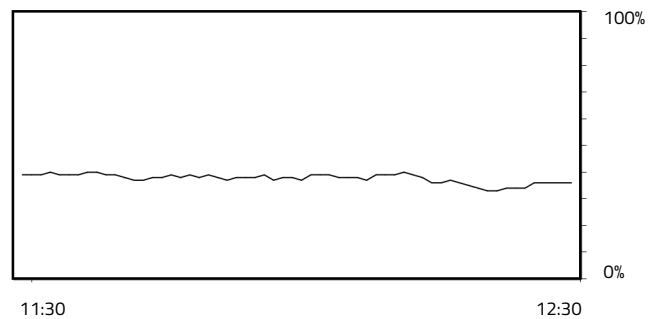
#### TEMPERATURE

Air Maximum: 15.6°C Air Minimum: 13.4°C  
Track Maximum: 39.3°C Track Minimum: 37.8°C



#### RELATIVE HUMIDITY

Maximum: 40.0% Minimum: 33.0%



— TRACK TEMPERATURE  
— AIR TEMPERATURE

Weather Data Supplied by FIA